

Figure 1 - A „triad“ sub-network (WP2)

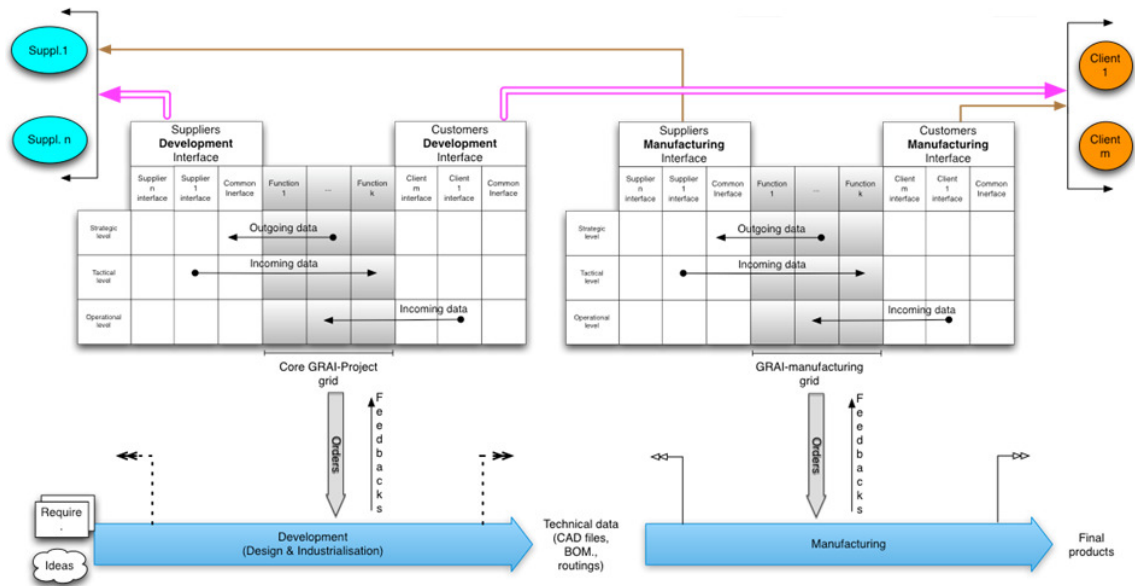


Figure 2 - The CONVERGE modelling framework (WP2)

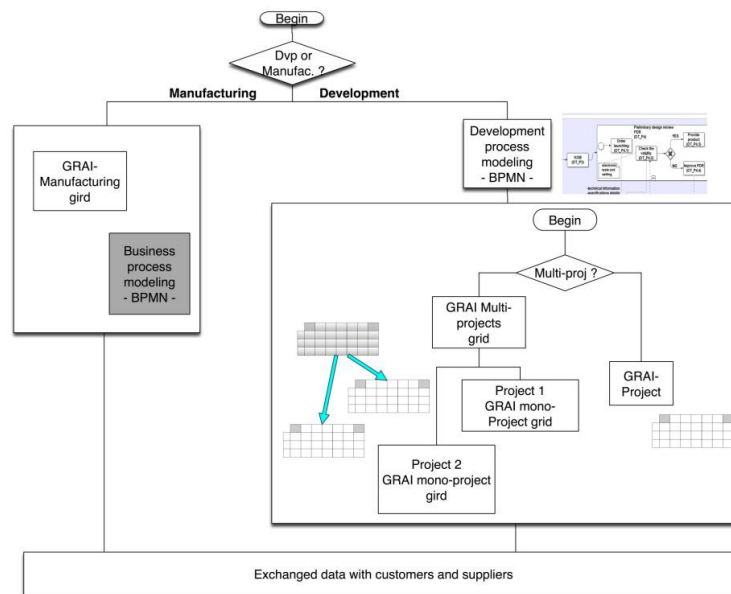


Figure 3 - The CONVERGE modelling algorithm (WP2)

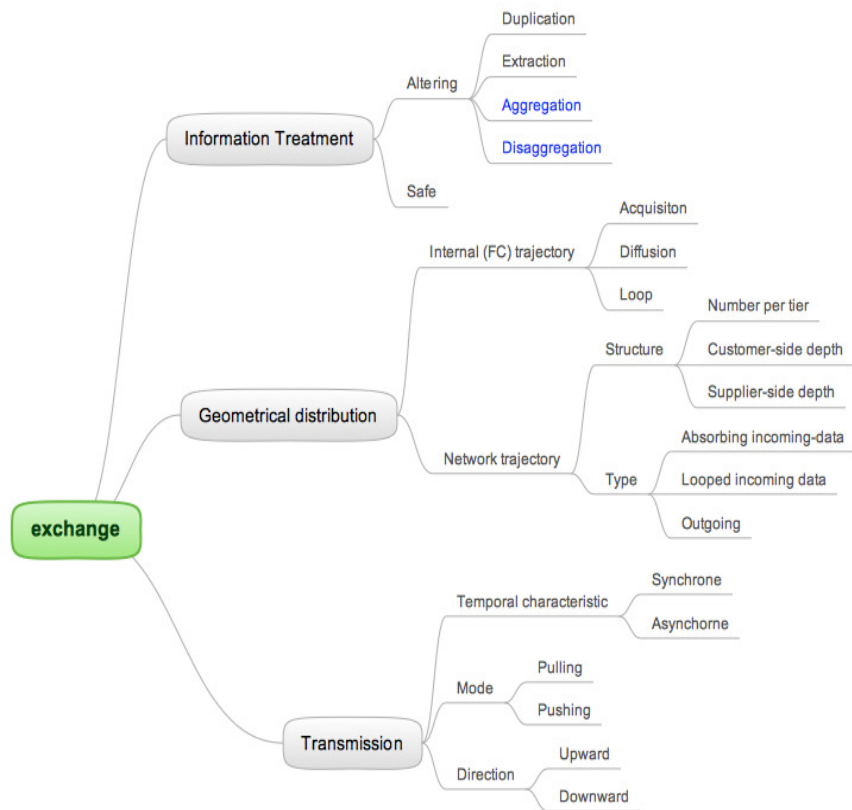


Figure 4 - Information exchange taxonomy (WP2)

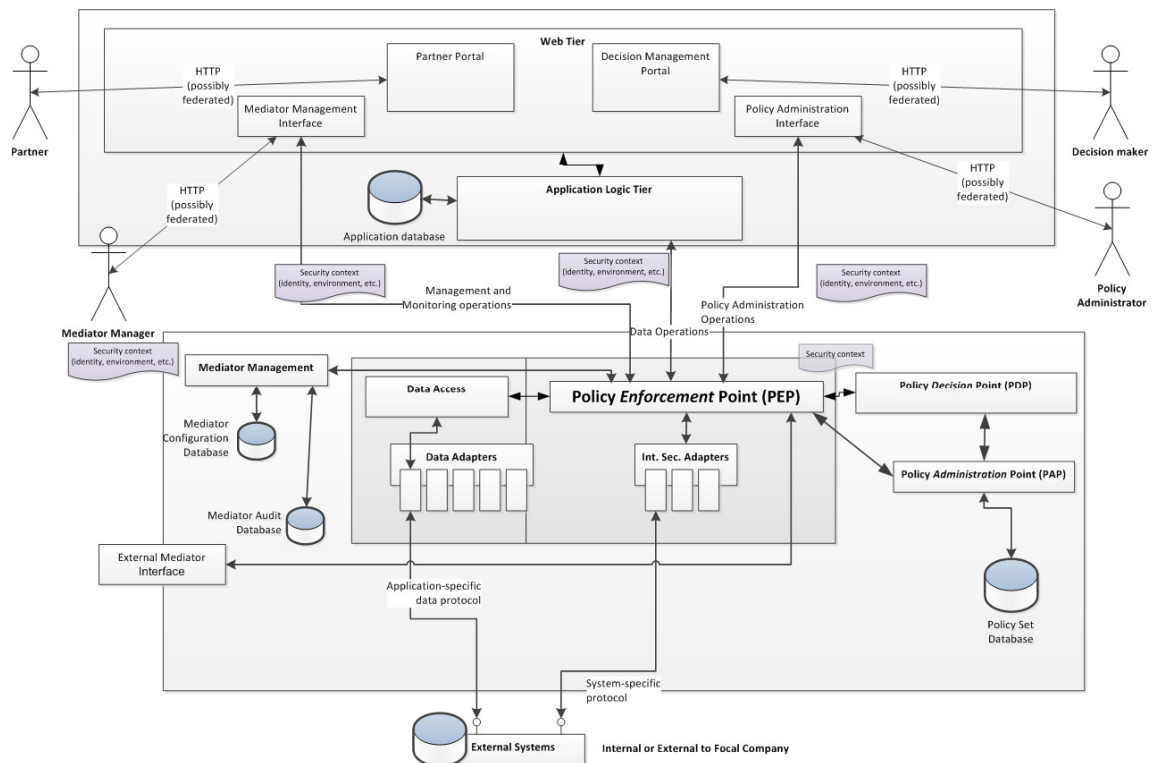


Figure 5 - System architecture (WP3)

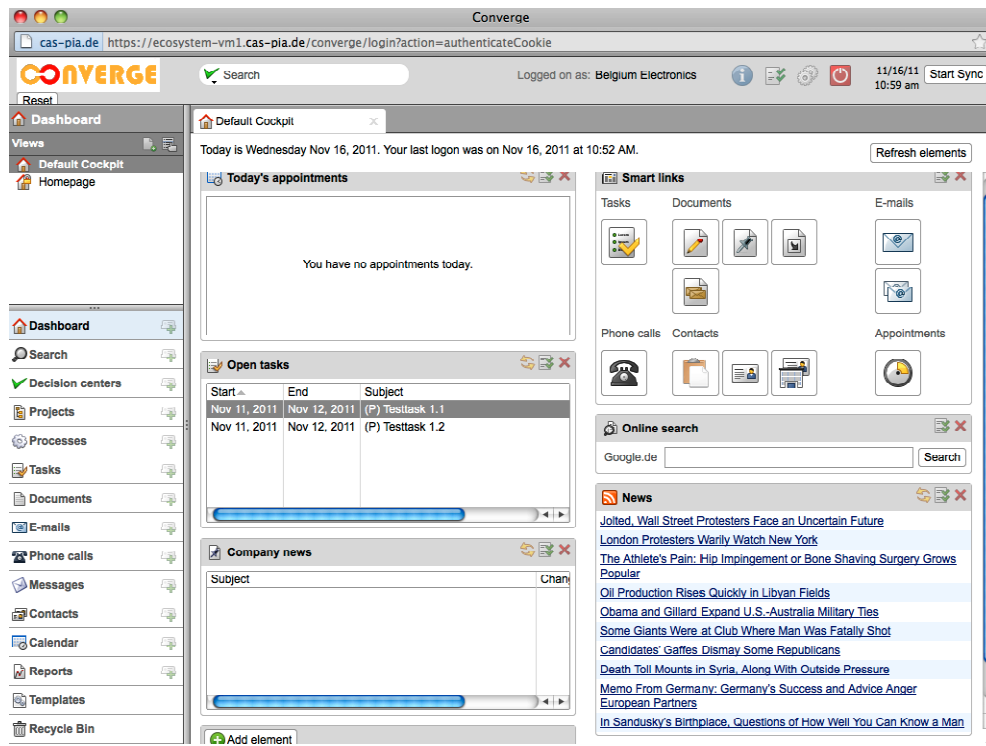


Figure 6 - Dashboard of the CONVERGE portal (WP5)

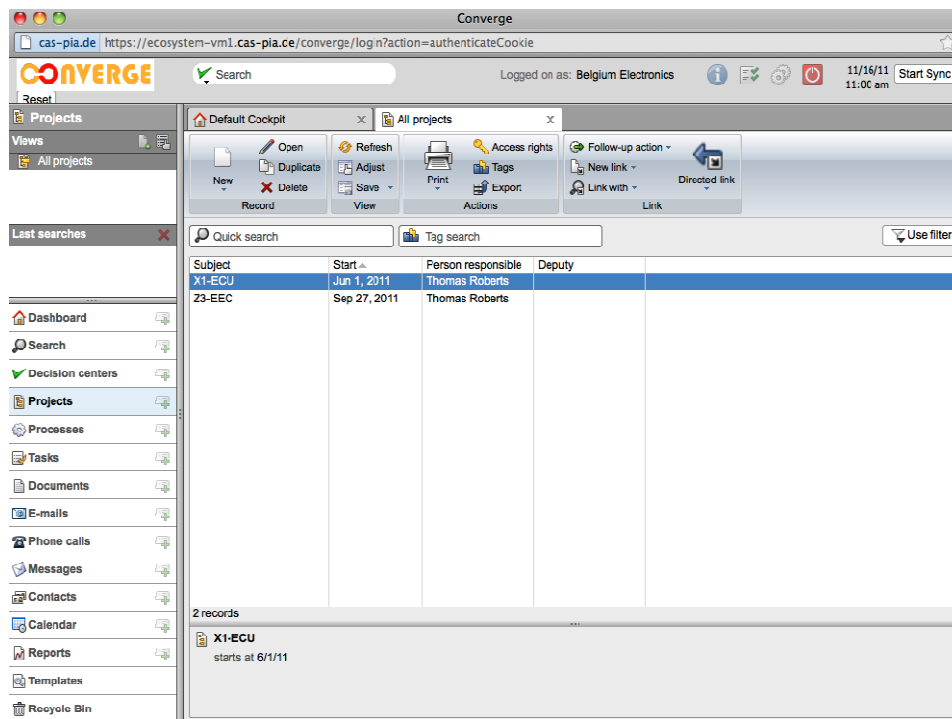


Figure 7 - Project management interface of the CONVERGE portal (WP5)

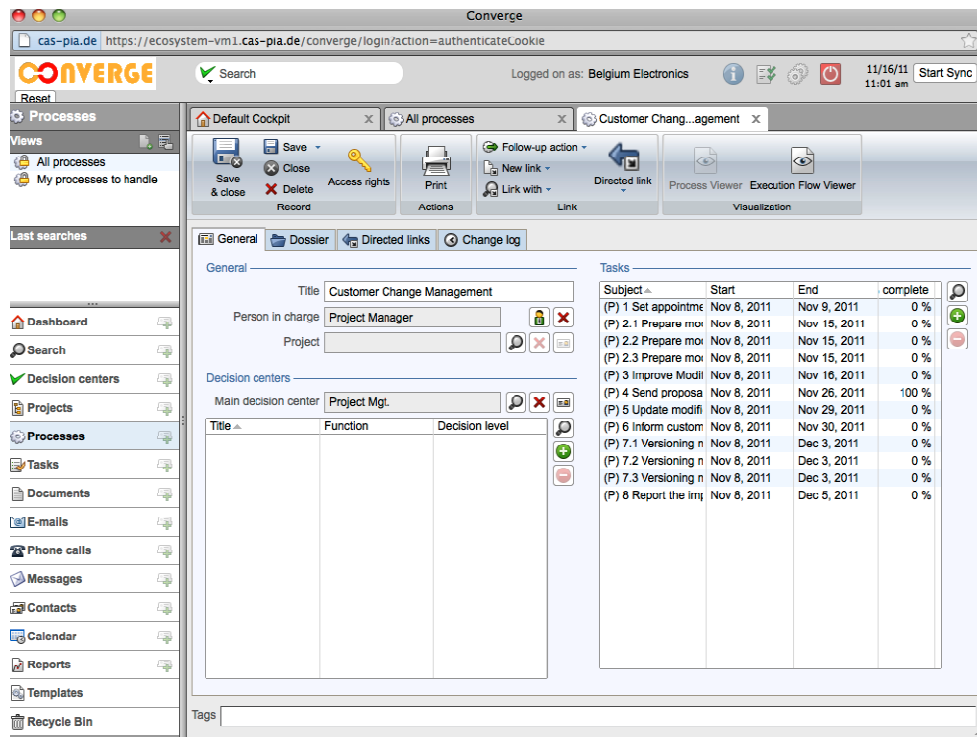


Figure 8 - Particular process management of the CONVERGE portal (WP5)

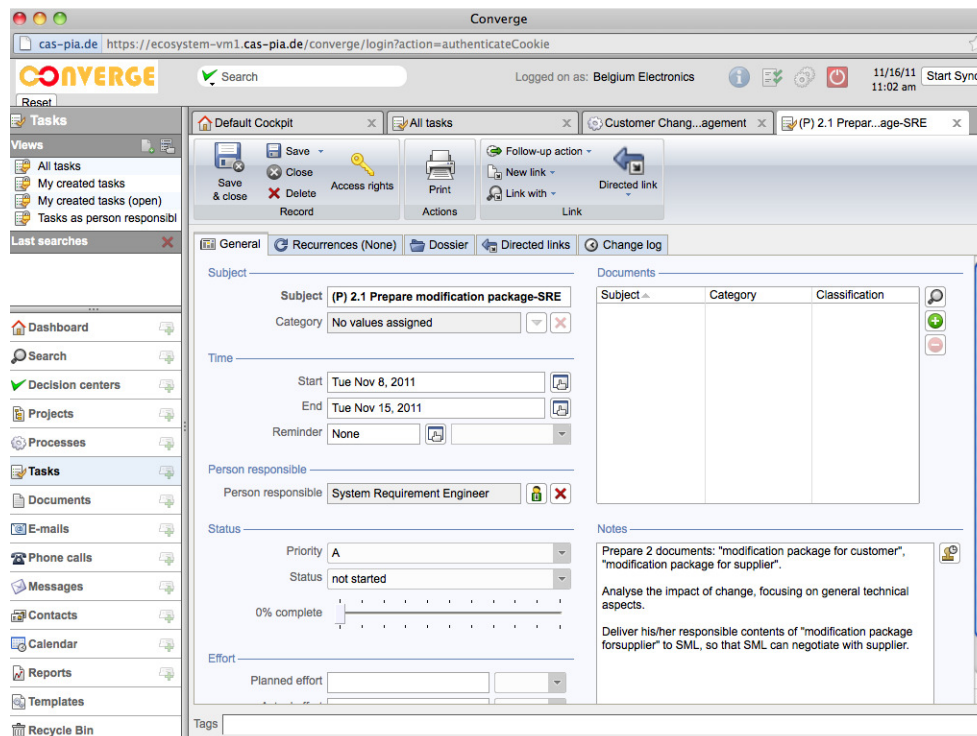


Figure 9 - Task detail management of the CONVERGE portal (WP5)

Level	Direction	Record type	Subject	Additional	Date	Created by	Created on
1	Incoming	Task	(P) 1 Set appointment	A	11/8/11	Michel Toqueville	Nov 8, 2011 10:52:04 AM
1	Outgoing	Task	(P) 3 Improve Modification Package for supplier	A	11/8/11	Michel Toqueville	Nov 8, 2011 10:52:03 AM
1	Outgoing	Document	Modification Package for supplier		10/27/11	Belgium Electronics	Sep 13, 2011 10:50:16 AM
1	Outgoing	Document	Modification Package for supplier		9/28/11	Belgium Electronics	Sep 13, 2011 10:50:50 AM
1	Outgoing	Document	Modification Package for supplier		10/28/11	Michel Toqueville	Sep 29, 2011 3:45:57 PM
2	Outgoing	Project	Z3-EEC	Thomas R	9/27/11	Process Modeller	Sep 27, 2011 2:01:17 PM
2	Outgoing	Task	(P) 4 Send proposal paper	A	11/8/11	Michel Toqueville	Nov 8, 2011 10:52:03 AM
2	Outgoing	Document	Modification Package for supplier		9/28/11	Belgium Electronics	Sep 13, 2011 10:50:50 AM
2	Outgoing	Document	Modification Package for supplier		10/28/11	Michel Toqueville	Sep 29, 2011 3:45:57 PM
3	Outgoing	Process	Customer Change Management	Project Manager	11/8/11	Michel Toqueville	Nov 8, 2011 10:52:02 AM
3	Outgoing	Task	(P) 5 Update modification package for supplier	A	11/8/11	Michel Toqueville	Nov 8, 2011 10:52:04 AM
3	Outgoing	Phone call	Decide the trade off	Holger Bär		Belgium Electronics	Sep 13, 2011 10:58:35 AM

Figure 10 - The process trajectory of the CONVERGE portal (WP5)

Subject	Start	End
2.1 Prepare modification package-SRE	Jan 1, 2000	Jan 6, 2000
2.2 Prepare modification package-PM	Jan 1, 2000	Jan 8, 2000
6 Inform customer change management committee	Jan 1, 2000	Jan 23, 2000
7.1 Versioning modification package-SRE	Jan 1, 2000	Jan 26, 2000
1 Set appointment	Jan 1, 2000	Jan 2, 2000
3 Improve Modification Package for supplier	Jan 1, 2000	Jan 9, 2000
2.3 Prepare modification package-SwML	Jan 1, 2000	Jan 8, 2000
4 Send proposal paper	Jan 1, 2000	Jan 19, 2000
5 Update modification package for supplier	Jan 1, 2000	Jan 22, 2000
7.3 Versioning modification package-SML	Jan 1, 2000	Jan 26, 2000
7.2 Versioning modification package-PM	Jan 1, 2000	Jan 26, 2000
8 Report the impact analyses of change	Jan 1, 2000	Jan 28, 2000

2.1 Prepare modification package-SRE (Priority A)
 starts at 1/1/00
 due 1/8/00
 Not started

Figure 11 - The template gallery (WP5)

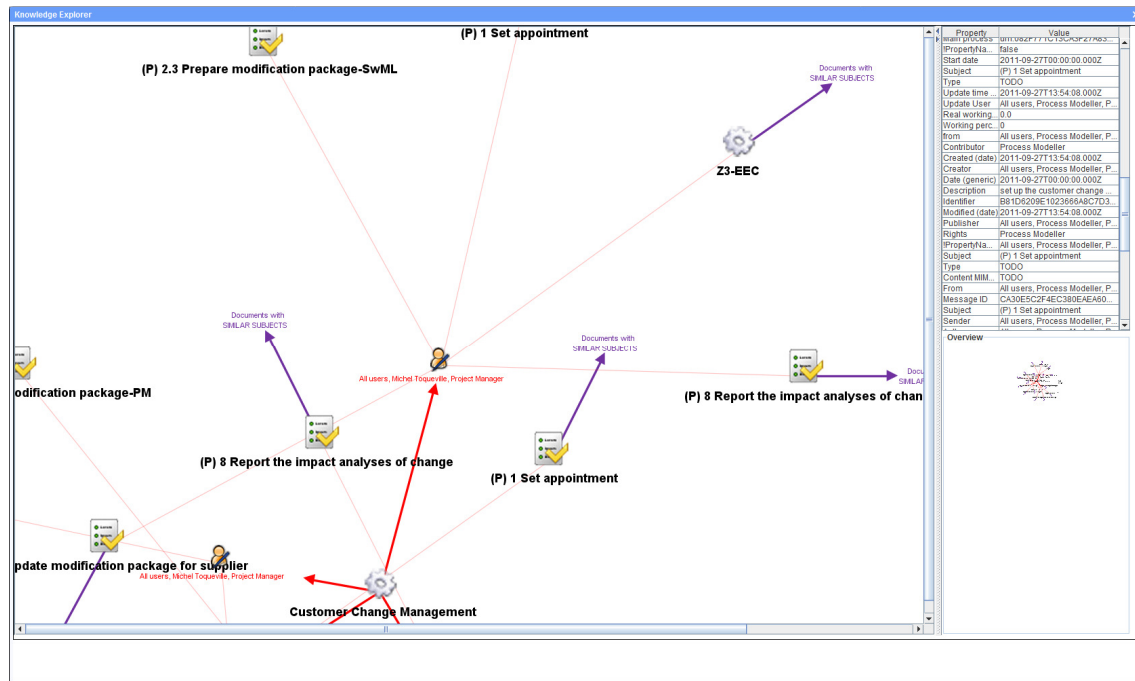


Figure 12 - The knowledge explorer (WP5)

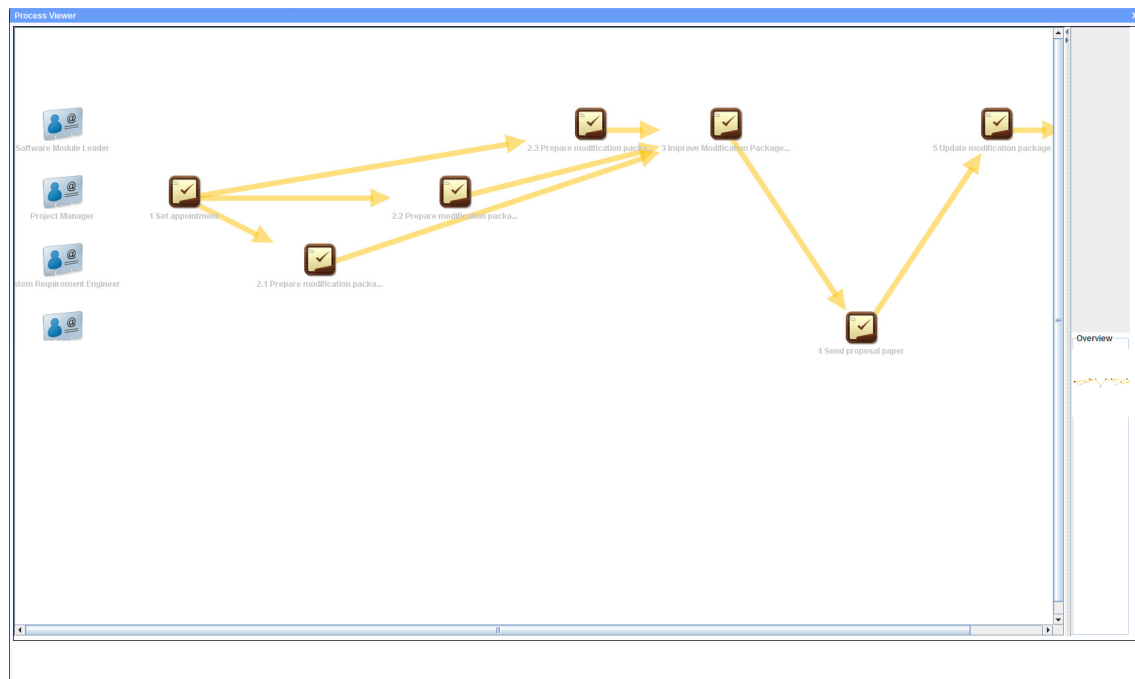


Figure 13 - The process viewer (WP5)

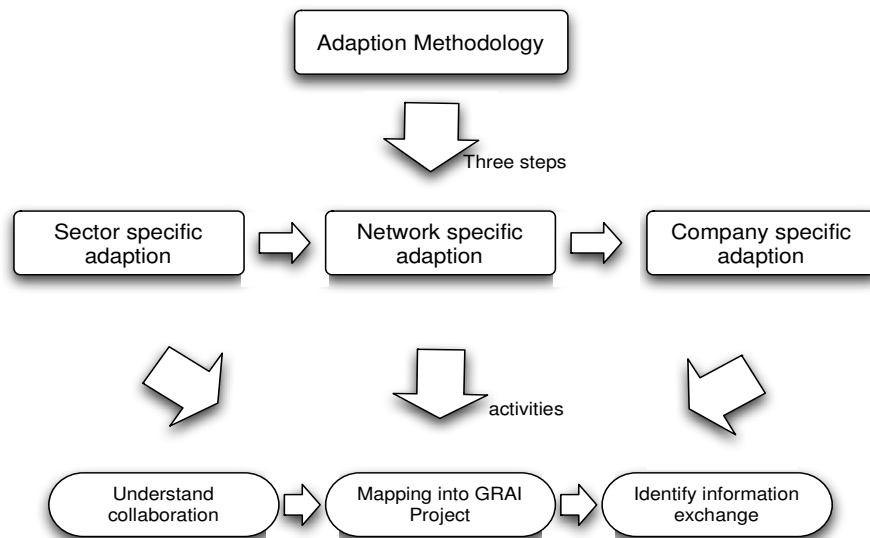


Figure 16 - Deployment roadmap (WP4)

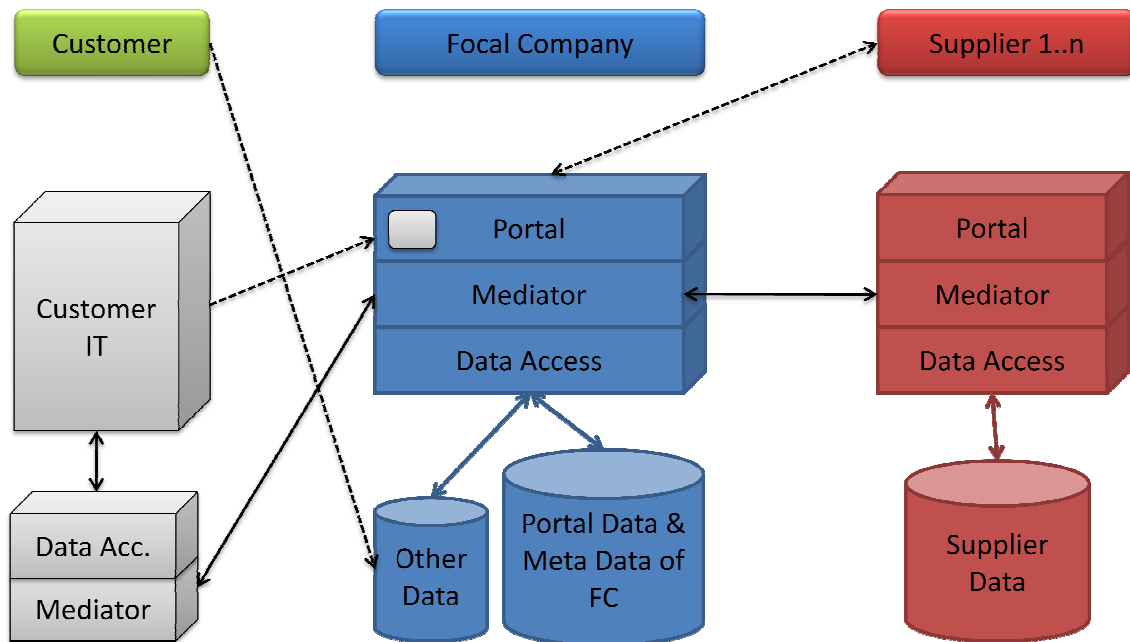


Figure 17 - Flexible Supply Chain Integration Scenarios (WP4)

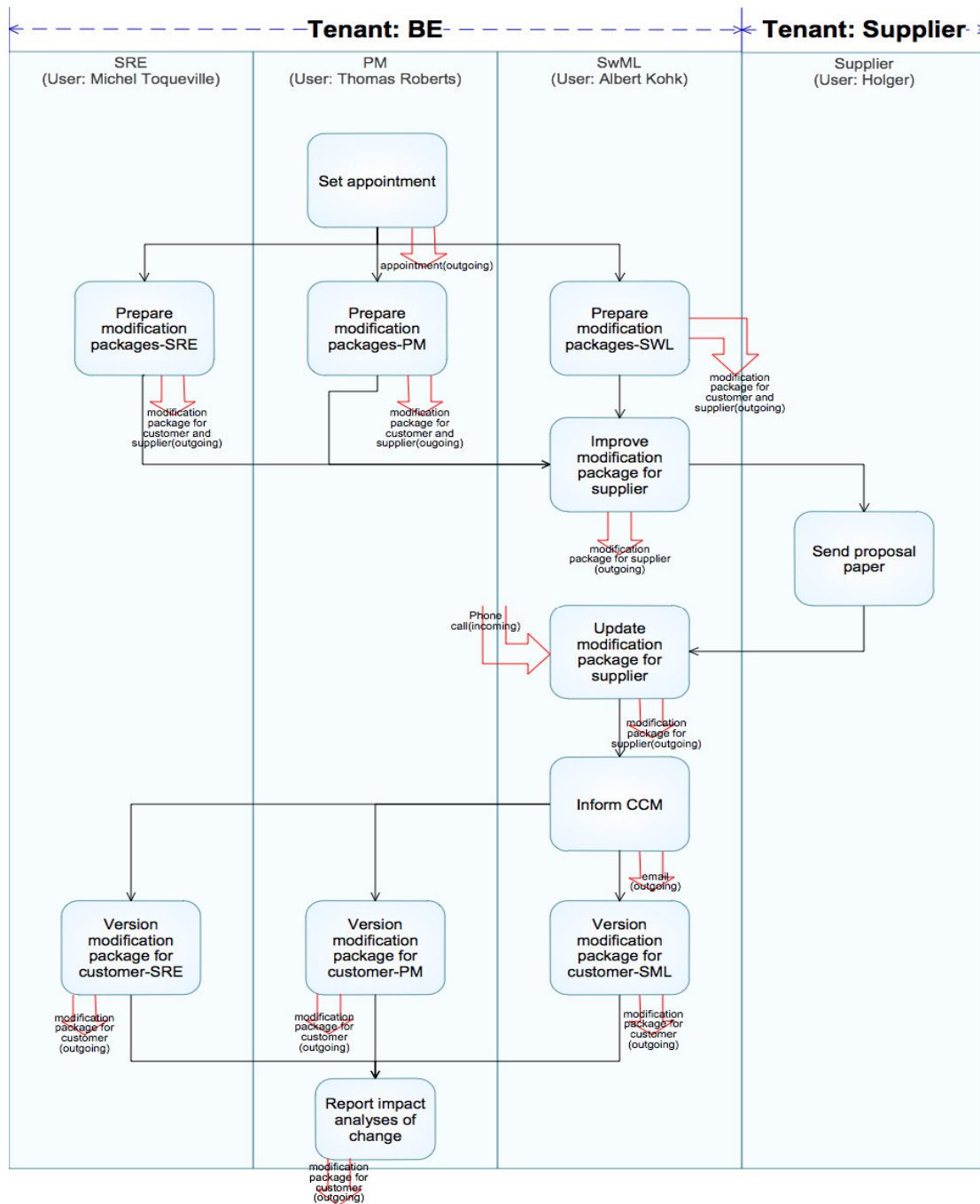


Figure 18 - The illustrative case – Change management process (WP4)



1st General Assembly in Karlsruhe – 09/06/2009



Scientific Workshop in Paris – 23/03/2010



3rd General Assembly in Athens – 29/04/2010